



Changzhou Tengyun Technology Co., Ltd.

Changzhou Tengyun Technology Co., Ltd.

Building 9, Floor 4, Automobile Intelligent Components  
Industrial Park, No. 6, Beitanghe East Road, Tianning  
District, Changzhou City, Jiangsu Province

0519-88835585

info@tengyun.tech

www.tengyun-mobility.com



Scan the code for  
consultation.

## Product Catalogue

PRODUCT CATALOGUE CATALOGUE



The accessibility travel expert by your side

Changzhou Tengyun Technology  
Co., Ltd.

## Table of Contents

### CONTENTS

01	Company Introduction	02
02	Wellness Chair Series 08 Base-mounted lifting seat Track-type lifting seat	
03	Wheelchair Elevator Series 18 Cantilever elevator Stepping-type elevator	
04	Extension Stair Series 24 Push-type electric stair steppers	
05	Wheelchair Restraint Series 28 Track-type fixation device Disc-type fixation device	

Traveling with a  
companion

Sharing the beauty

Changzhou Tengyun Technology Co., Ltd. was established on December 26, 2023. It is a company specializing in the research, production and sales of accessibility auxiliary travel equipment installed on vehicles. The main products include the Fuzhi seat series, wheelchair elevators, wheelchair guides, wheelchair storage, wheelchair restraint, disabled person's assisted driving, and electric steps, providing comprehensive accessibility travel solutions and supporting services for customers with mobility impairments both domestically and internationally. The main clients include domestic and foreign automobile manufacturers, vehicle modification factories, as well as individual or group organizations at the terminal level.

The team members consist of outstanding talents from the industry, possessing profound professional knowledge and rich management experience. They are actively building a corporate governance model that integrates the capital market to seize the development opportunities and challenges brought about by the growing demand for barrier-free travel equipment for people's better quality of life!

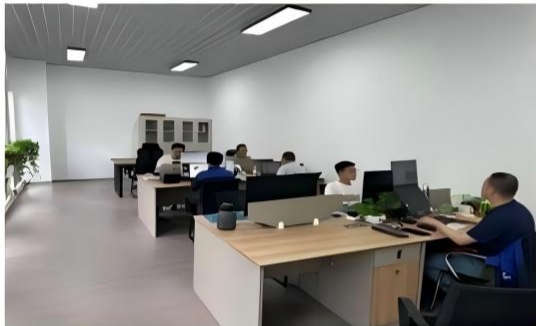
In just over a year, the team has achieved multiple technological breakthroughs in response to industry pain points, successfully applying for 11 patents, and using their strong capabilities to solidify the competitiveness of their products.





## Technical strength

The current core R&D team of the project consists of 6 members, all of whom have bachelor's degrees or above. Among them, 2 have master's degrees. The project leader graduated from Southeast University and has 8 years of experience in the research and management of welfare equipment.



### Team project

Has participated in the research and verification of the models such as the Shanghai Auto Grand Trunk G90 electric version, the Guangzhou Changan M8 and E9 electric version, and the Great Wall Weichai Gaoshan electric version.

Among them, the Daogong G90, Guangzhou Auto Changan M8 and E9 are all already in production and have been released.

The team has many years of experience in the research and development of wheelchair lifts. The wheelchair lifts they jointly developed have been successfully applied to multiple export models such as Yutong buses, Xiamen Kinglong buses and Zhongtong buses.

## Production workshop



## Automated production



## Warehouse storage



# Honorary Qualifications

## Honor And Qualifications

"Honors bear witness to strength, qualifications shape destiny."





# 01

## Lift-and-rotate seat







The welfare seat is a special type of car seat that is installed on the vehicle and can move back and forth, rotate left and right, extend outward, and be raised and lowered. It can greatly facilitate the entry and exit of the elderly or disabled who have difficulty moving, providing them with a convenient and comfortable experience when getting in and out of the vehicle.



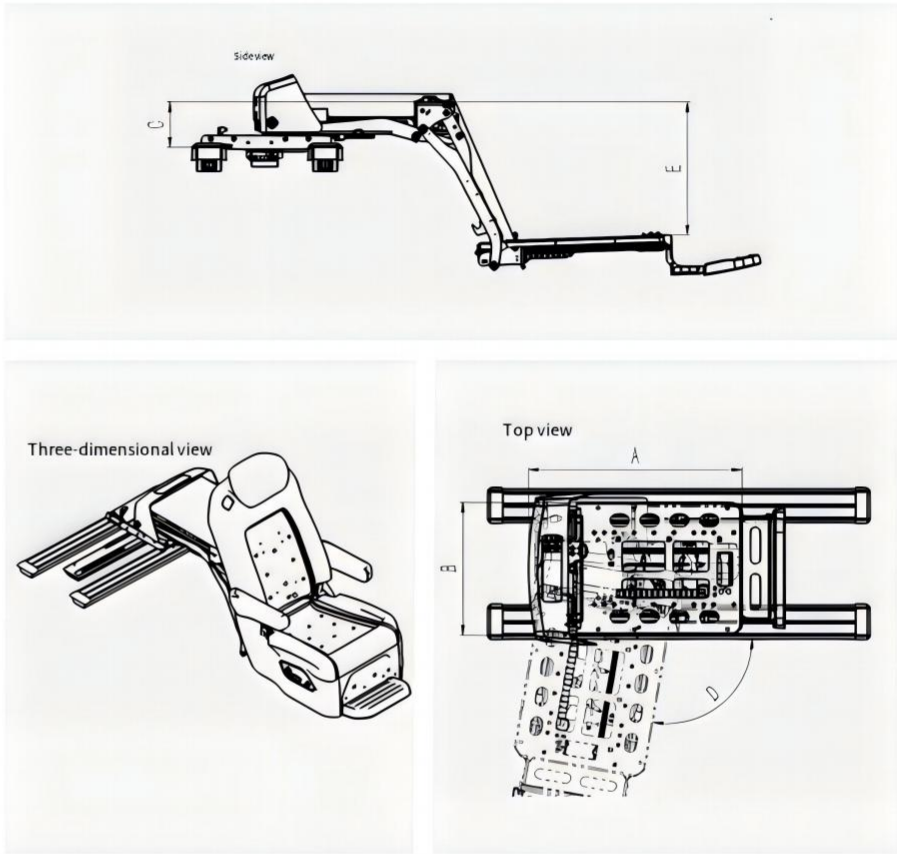
## S5AR-390 Long Slide Rail Type



### S5A Technical Specifications

	Patented product	Working voltage	12V
	EMC Electromagnetic Compatibility	Power	120W
	Compliance Certification	Rated load	150Kg
	Collision test	Rotation angle	0~110°
	European E-Mark Certification	Maximum load capacity of the foot pedal	75Kg
	12,500 cycles of testing	Equipment weight	(Without slide rails) 65Kg

## Product size



Model number	Unit: mm	Director-General of the Institution	Overall width of the institution	High level of the institution	Rotation angle	Descending stroke	Rotation direction
		A	B	C	D	E	
S5A-390-L		643	400	144	0-110°	390	Left-handed
S5A-390-R		643	400	144	0-110°	390	Right-handed

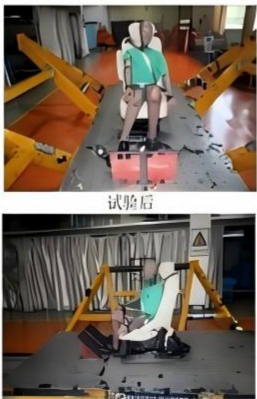
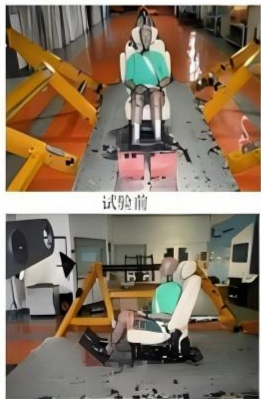


## S5AR-390 Long Slide Rail Type

- 1 Industry-standard electronic control, with outstanding performance.
- 2 First to introduce the track-type design, providing an extremely large space.
- 3 Self-developed locking mechanism, ensuring twice the safety.
- 4 Compact in size and easy to install.
- 5 Testing Certification, Trustworthy.



## Experimental photo



## Seat Function

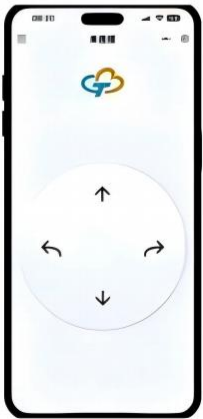
- Equipped with a handheld remote control switch, Bluetooth wireless remote control for mobile phones, and firmware upgrade function.
- Support the modification of the original vehicle seats.
- With manual emergency function;
- The movement trajectory of the seat can be programmed, the foot pedals can be adjusted in length (0 - 50mm).
- Supports CAN communication function (optional);
- Passenger SBR reminder (optional)
- Seat ventilation system (optional)
- Seat heating system (optional)
- Wireless phone charging system (optional)
- Leg support motor linkage control (optional)



## Mobile phone connectivity








wechat



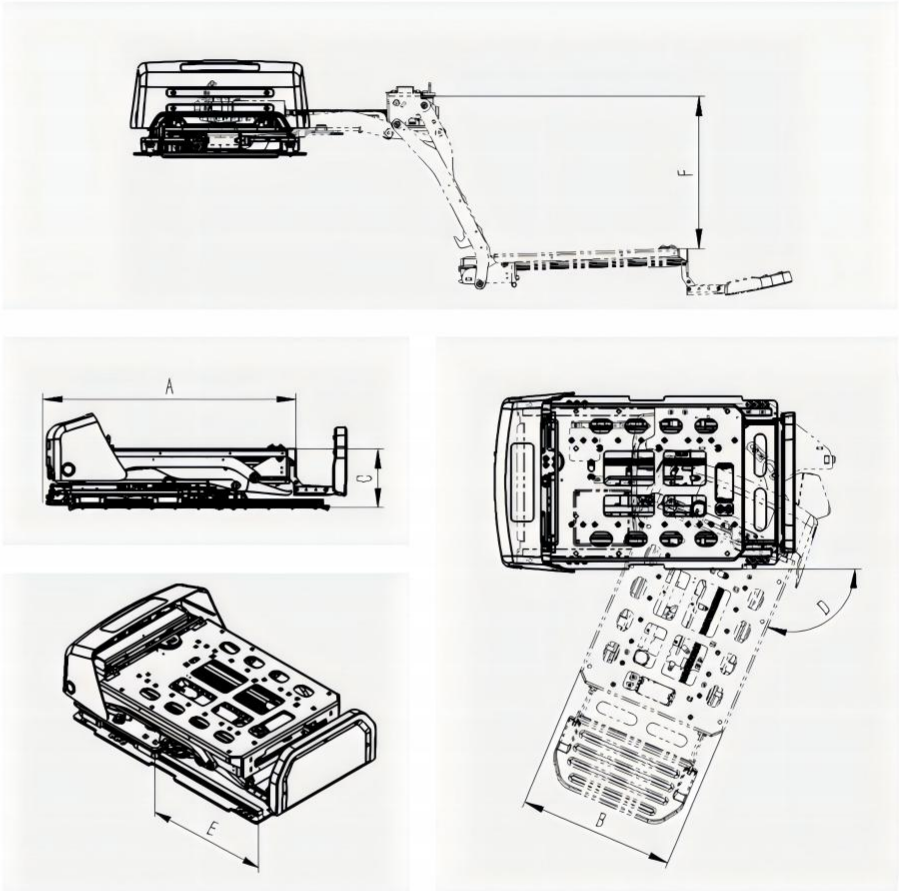
## S5BR-390 base rail type



### S5B Technical Specifications

	Patented product	Working voltage	12V
	EMC Electromagnetic Compatibility Compliance Certification	Power	120W
	Collision test	Rated load	150Kg
	European E-Mark Certification	Rotation angle	0~113°
	12,500 cycles of testing	Maximum load capacity of the foot pedal	75Kg
		Equipment weight (Excluding the seat)	78Kg

## Product size



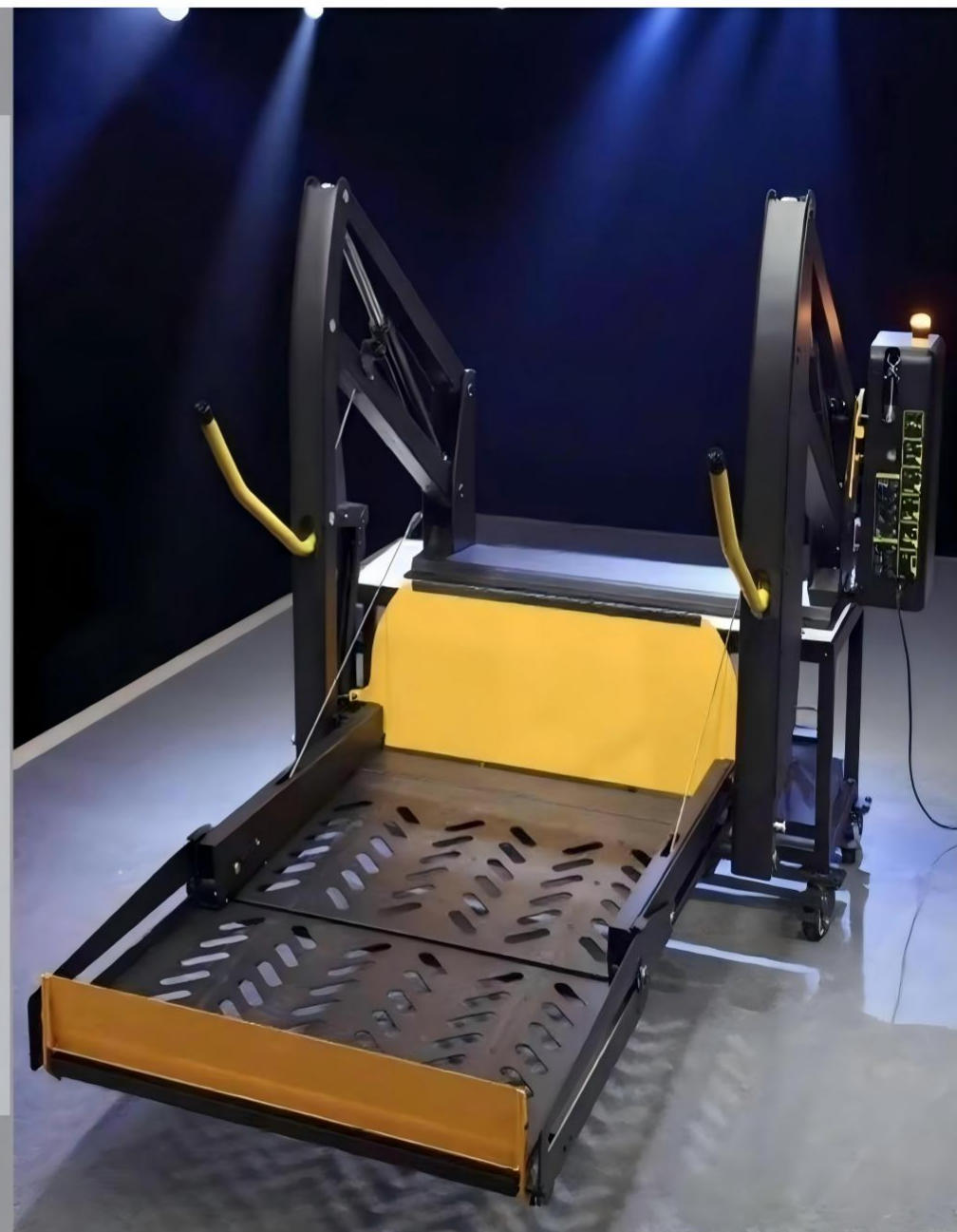
Model number	Unit: mm	Institutional length, institutional width, institutional height, rotation angle, translation distance					Descending stroke	Installation location
		A	B	C	D	E		
S5B-390-L		652	400	151	0-113°	360	390	Left side
S5B-390-R		652	400	151	0-113°	360	390	Right side



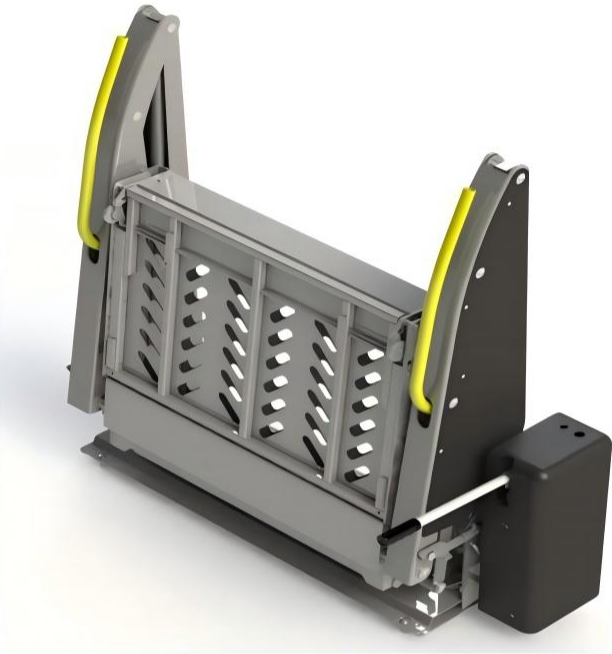
# 02

## Cantilever elevator

The wheelchair lift installation is suitable for commercial vehicles and buses. It can very conveniently assist the elderly or disabled who have difficulty moving to get on and off the vehicle.



# L3A telescopic type



## L3A Technical Specifications



Patented product

Working voltage ..... 12V\24V



EMC Electromagnetic  
Compatibility Certification

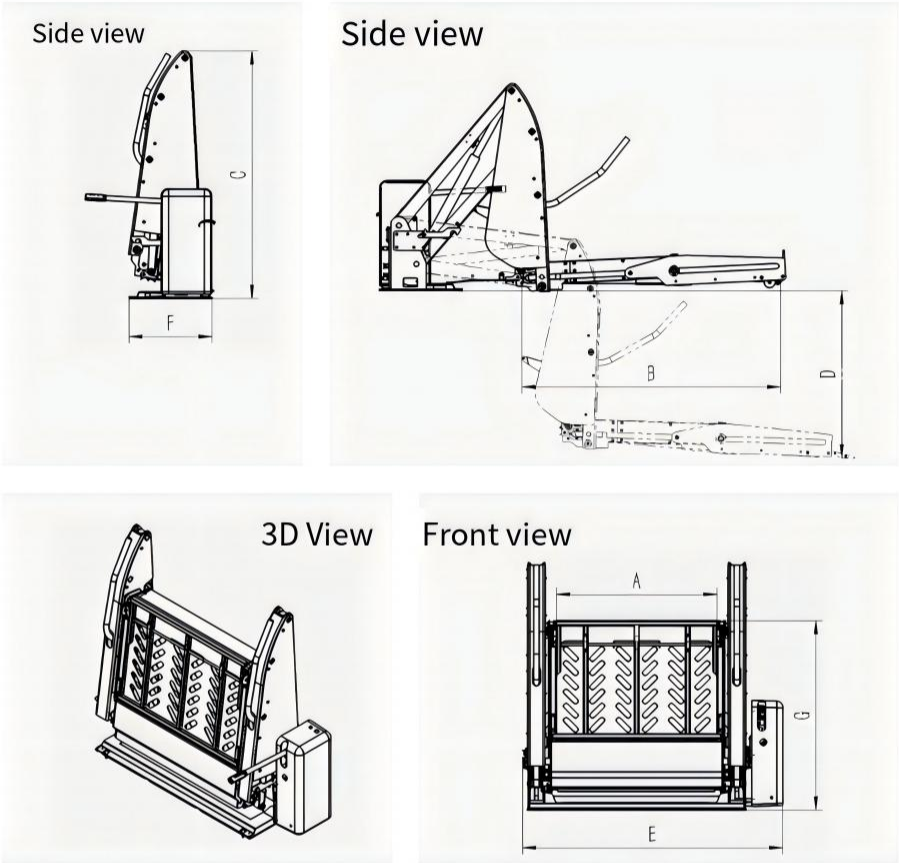
Power ..... 500W



12,500 cycles of testing

Rated load ..... 350Kg

# Product size



Model number	Unit: mm	Platform net width	Platform net length	Total height of the building	Descending stroke	Overall width of the institution	Institutional thickness	Passage width
		A	B	C	D	E	F	G
L3B-740X1060		740	1060	1160	900 reviews	1132	385	590
L3B-860X1320		860	1320	1420	900 reviews	1252	385	710



## L3B Open Type



## L3B Technical Specifications



Patented product

Working voltage ..... 12V\24V



EMC Electromagnetic  
Compatibility Certification

Power ..... 500W

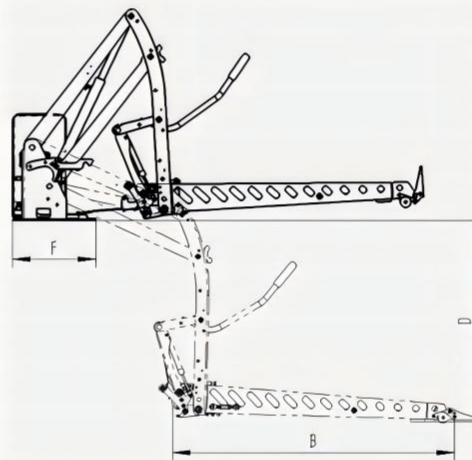


12,500 cycles of testing

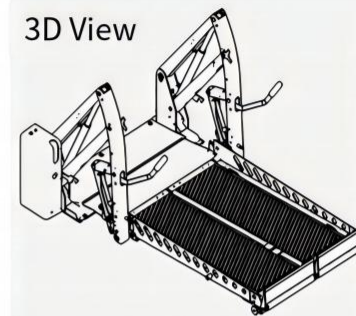
Rated load ..... 350Kg

## Product size

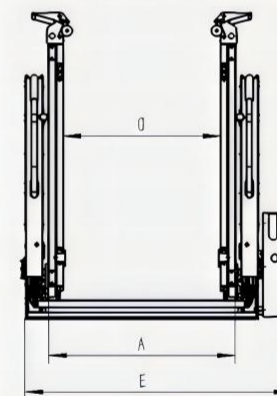
Side view



3D View



Front view



Model Number	Unit: mm	Platform net width	Platform net length	Total height of the building	Descending stroke	Overall width of the institution	Institutional thickness	Passage width
		A	B	C	D	E	F	G
L3B-740X1060		740	1060	1160	900 reviews	1132	385	590
L3B-860X1320		860	1320	1420	900	1252	385	710

# 03

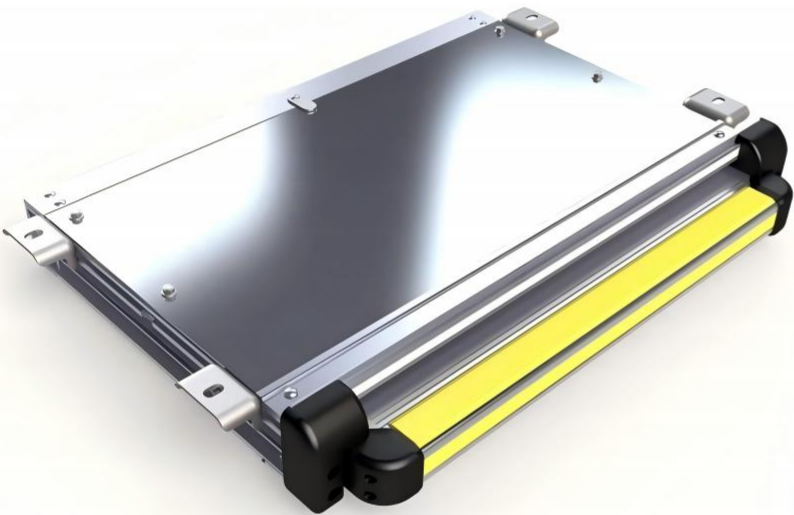
## Push-type stair steppers

The electric step is a kind of step installed on the vehicle, which can extend outward or swing. When not in use, the step is retracted; when in use, the step extends or unfolds, providing great convenience for passengers to enter and exit the vehicle.

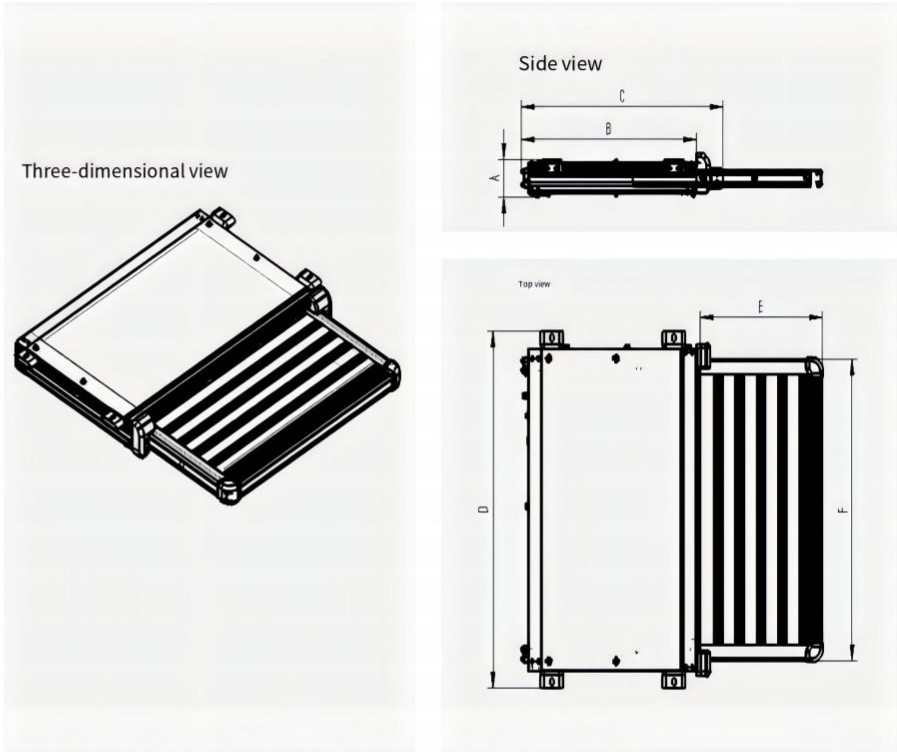







# SEF Electric Step Trainer



# Product size



## S5B Technical Specifications

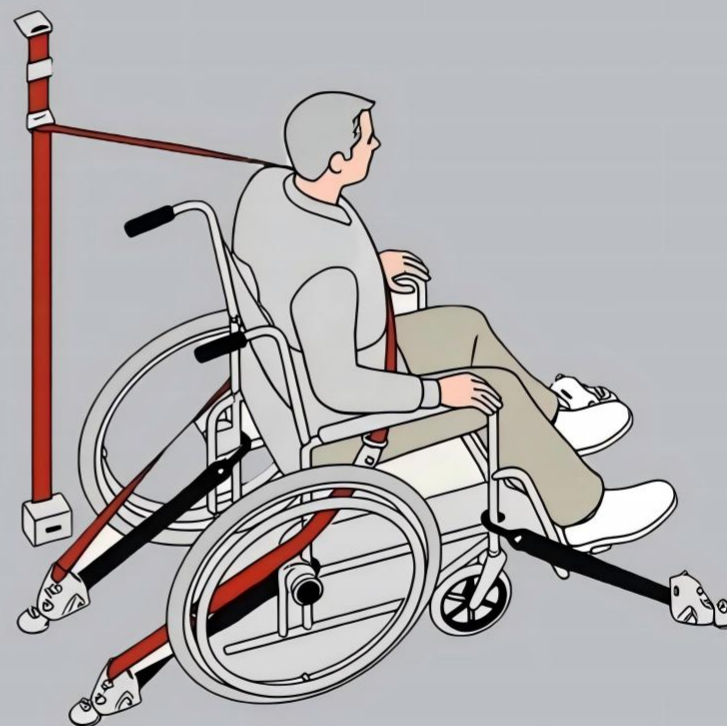
	Patented product	Working voltage	12/24Vdc
	EMC Electromagnetic Compatibility Certification	Power	30W
	200,000 cycles of durability	Maximum load capacity	200Kg

Model Number	Unit: mm	Installation thickness	Installation depth	Total step length	Total step width	Step depth	Step width	Self-respect
		A	B	C	D	E	F	
SEF-500X235		74	365	433	610	235	500	9kg
SEF-600X300		74	430	498	710	300	600	12kg
SEF-900X300		74	430	498	1010	300	900	15kg
SEF-1200×300		74	430	498	1310	300	1200	18kg

# 04

## Wheelchair and passenger restraint system

The wheelchair restraint device is a type of restraint system installed on the vehicle floor, which securely fixes the wheelchair and the user, ensuring their safety and stability during the vehicle's movement. It keeps the user in the original position to prevent any injuries.





## Product Introduction

The designed and produced wheelchair restraint system adopts the industry-leading four-gear double-rotor structure restraint and traction device. It has an attractive and compact design that can be operated with one hand directly. Each individual traction device can withstand a pulling force of 25,000N, far exceeding the industry standard.

The floor fixing clips are made by die-casting technology. Compared with the castings of similar products in the market, they have a more exquisite appearance and a higher safety factor.

The entire restraint system complies with the test requirements for wheelchair and its users' restraint system as stipulated in Article A.8 of "GB 13094-2017 Bus Structural Safety Requirements", as well as the dynamic test requirements for wheelchair restraint systems as specified in "ISO 10542-2".

- ★ Through ISO 10542-1:2012 dynamic testing;
- ★ The dual knobs on both sides of the traction device make it easy to adjust and tighten the traction belt.
- ★ Equipped with two-point safety belts, no additional holes need to be drilled for fixation.
- ★ The embedded track is equipped with rubber sealing strips, which can prevent dust from entering or prevent stepping on it when not in use.

## RS3A buried track system



### Product features

The vehicle floor needs to be cut with slots, and the fixed tracks should be installed in an embedded manner. The overall installation effect is both beautiful and does not obstruct passage.

## Configuration List

- 1 Wheelchair retractor × 4
- 2 Track Fixers
- 3 occupant restraint belts × 1
- 4 Shoulder strap × 1 (optional)
- 5 Shoulder Straps Installation Plates × 1 (Optional)
- 6 Fastening standard parts (optional)

## RS5A disc-mounted type



### Product features

The disc is fixed at a single point on the vehicle floor and can rotate 360°. It occupies a small space.

## Configuration List

- 1 Wheelchair retractor × 4
- 2 Disk fixator × 4
- 3 Seat belt × 1
- 4 Shoulder strap × 1 (optional)
- 5 Shoulder strap mounting plate × 1 (optional)
- 6 Fastening standard parts (optional)

Thank you for choosing our products from Tengyun Technology. This trust is the greatest driving force for us to move forward.

In the future, we will continue to focus on technological innovation and optimize the service experience, making each of our products a reliable companion for you.

Tengyun Technology, together with you, we will embark on a wonderful future.



Welcome to call for consultation.

Landline: 0519-88835585  
Mobile phone: 139 1584 5339



Quality Assurance



Feedback on opinions

Email: [info@tengyun.tech](mailto:info@tengyun.tech)



Tengyun Technology

TENGYUN TECHNOLOGY

